

Hunter 8K HDMI 2.1 3x1 Switch

9365-HUV-301SWH2.18K

USER MANUAL



www.hunterbharat.com

Product Introduction

Hunter 8K HDMI 2.1 3x1 Switch offers three inputs and one output, supporting resolutions up to 8K@60Hz and 4K@120Hz with YUV 4:4:4 8-bit color. It features VRR, HDR10, Dolby Vision, and 3D effects. Audio support includes Dolby Atmos, DTS, Dolby TrueHD, DTS-HD Master Audio, and PCM7.1. Compatible with all operating systems (Windows, Mac OS, Linux), it seamlessly integrates with Logitech Harmony, Xbox One X, PS4 Pro, Roku 4, Amazon Fire TV, Blu-ray players, and projectors. Control via IR remote and panel buttons. Powered by a 5V/2A adapter.



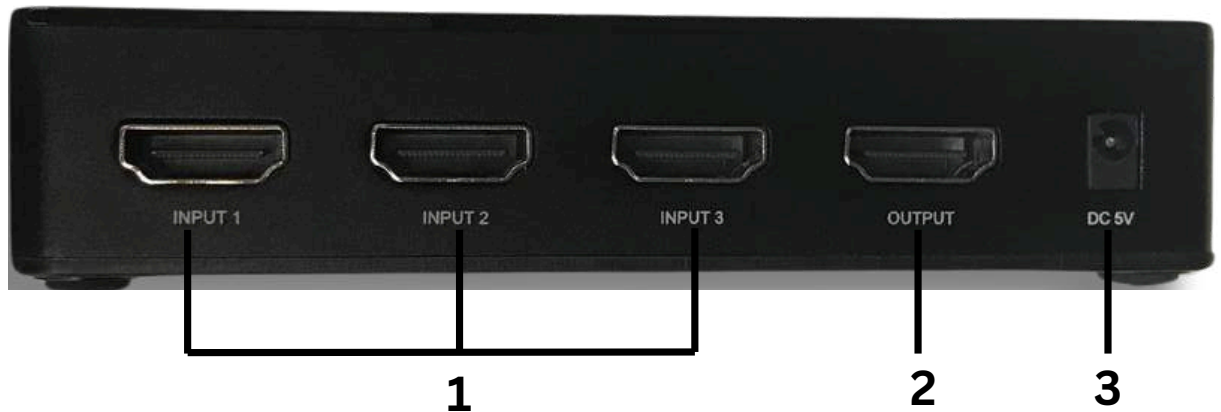
Features

- 8K HDMI 2.1 3x1 Switch: Allows you to connect three HDMI input sources to one HDMI output device.
- Resolution Support: Supports resolutions up to 8K@60Hz, 4K@120Hz, and 1080P@240Hz with 4:4:4 8bit color.
- 3D Effect: Supports 3D video formats for immersive entertainment.
- Compatibility: Highly compatible with all major operating systems such as Windows, Mac OS, and Linux. Also works seamlessly with various devices including Logitech Harmony, Xbox One X, PS4 Pro, 4K, Roku 4, Amazon Fire TV, Blu-ray players, and projectors.

Specifications

• Product Name	Hunter 8K HDMI 2.1 3x1 Switch,3 In 1 Out-9365
• Input Port	3× HDMI (Female type)
• Output Port	1 × HDMI (Female type)
• Video Resolution	Up to 8K@60Hz ,4K@120Hz & 1080P@240Hz
• 3D Format support	Up to 1080P/60HZ
• Power Supply	5V/2A
• Material	Aluminum
• Operating Temperature	0°C to 40 °C
• Storage Temperature	-20°Cto 60 °C
• ESD Protection	±8kv(air-gap discharge)
• Dimensions(LxWxH)	65x110x24mm
• Weight	112g

Back Panel



- 1.HDMI Input-This slot is where you connect the HDMI source output from DVD,PS3
- 2.HDMI OUTPUT-HDMI signal output,connect to TV over a HDMI cable
- 3.DC 5V-Plug the 5V DC power supply in to the unit and connect the adaptor to AC wall outlet

Front Panel

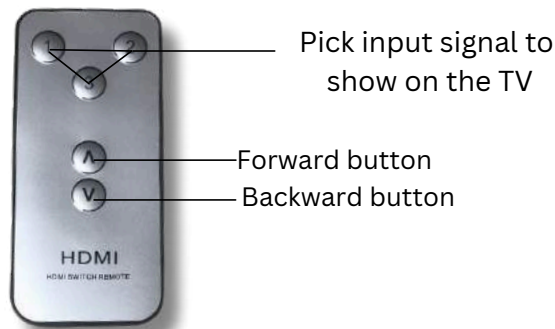


- 1.POWER-This red LED illuminates when the device is connected with power supply
- 2.SWITCH-SWITCH Press this button to select the input source
- 3.IR-IR Remote control signal receive
- 4.INPUT LED -These bi-color LEDs describe corresponding status. A green light means the signal has plus in and has been selected, a red light means the signal has been plugged in but has not been picked A dark LED means the signal is not plugged in
- 5.Output-this green LED illuminate when TV plug in over HDMI cablet has not been picked A dark LED means the signal is not plugged in

Connection Diagram



Remote Control



Warranty 1 Year



If your product does not work properly because of a defect in materials or workmanship, our Company (warrantor) will, for the length of the period indicated as 1 Years, which starts with the date of original purchase ("Limited Warranty period"), at its option either (a) repair your product with new or refurbished parts, or (b) replace it with a new or a refurbished product. The decision to repair or replace will be made by the warrantor.

During the "Labor" Limited Warranty period there will be no charge for labor. During the "Parts" warranty period, there will be no charge for parts. You must mail-in your product during the warranty period. This Limited Warranty is extended only to the original purchaser and only covers product purchased as new. A purchase receipt or other proof of original purchase date is required for Limited Warranty service.